

Creating Healthy Waterways together

In the Maribyrnong and Moonee Ponds Creek Catchments.

28 May 2019



The Healthy Waterways Strategy journey until today

Context

- In the spirit of co-design and co-delivery and the principles we developed together, **being open and frank.**
- Melbourne Water is working through the challenge of delivering the HWS. It is a big task and super complex, it touches nearly all groups across MW. Each group is working hard to understand it's role in Strategy implementation.
- **Project Co-ordinator** to help pull all the pieces together.
- A **Change Working Group** working hard with the Co-ordinator to work out how to best organise ourselves to tackle the many tasks within the Strat. There's the question of co-delivery? What does this look like? How do we link with IWM, the CMA. How does MW best support the collaboration?
- Complexity at it's finest!

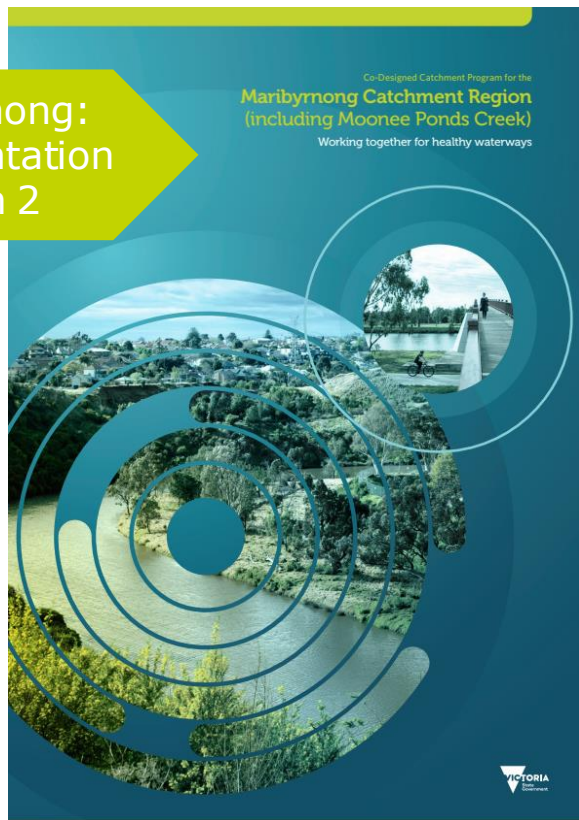


Progress - some wins

- A **draft Reporting Framework** (or MERI framework) will be ready by the end of June. Leaders across Melb Water are having the difficult conversations and making progress on this very complex task.
- **Region-wide Leadership Group** – Geraldine will speak more about this later.
- Discussions have begun on the '**Active Digital Space**' – *Reporting, Sharing Data, Enabling Community Conversations*. identifying what this looks like and who is the lead group at MW to progress this.
- Well represented on the **Customer Council** for **Waterways and Drainage Investment Planning**. The critical process to detail MW's program of works and investment in waterways, approved by the ESC, and enabling investment in a 5 year programs. (2021-26)
- 3 of the other catchments are busy **finalising their models of collaboration / alliances**, to best set themselves up for success in co-delivery.

HWS Recap

Maribyrnong: Implementation Forum 2

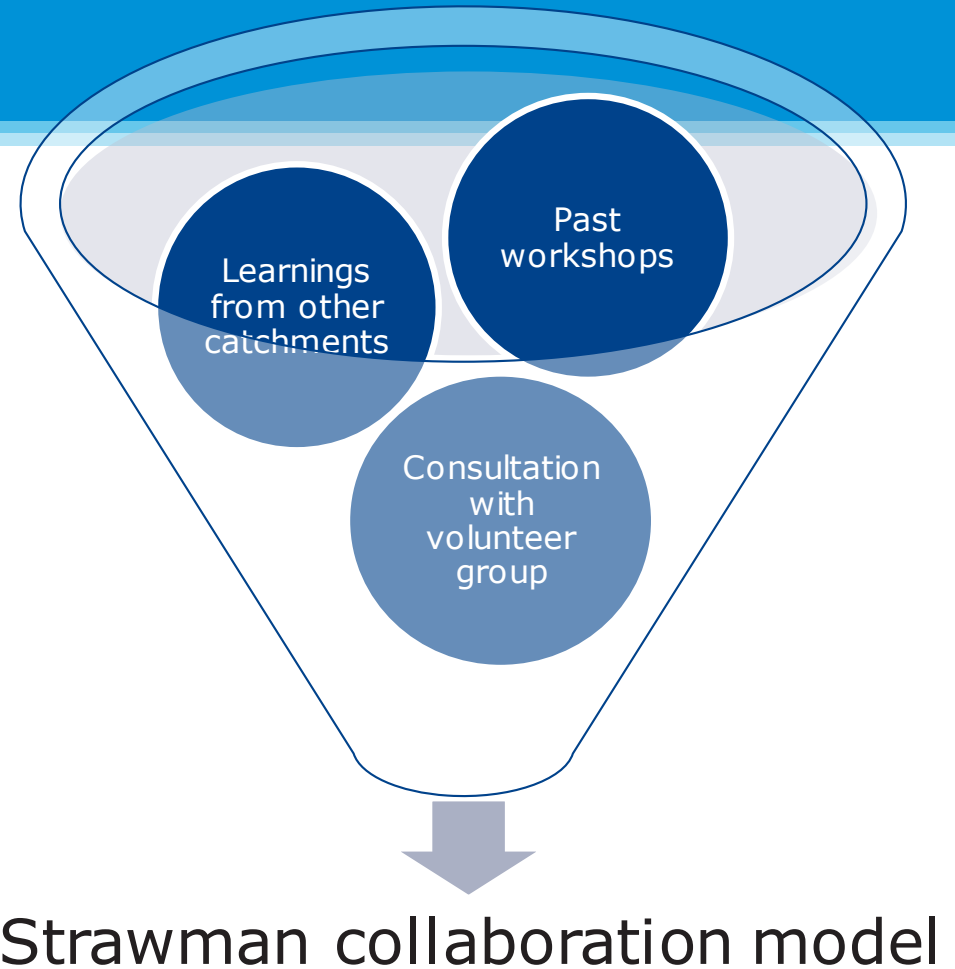


Other catchments

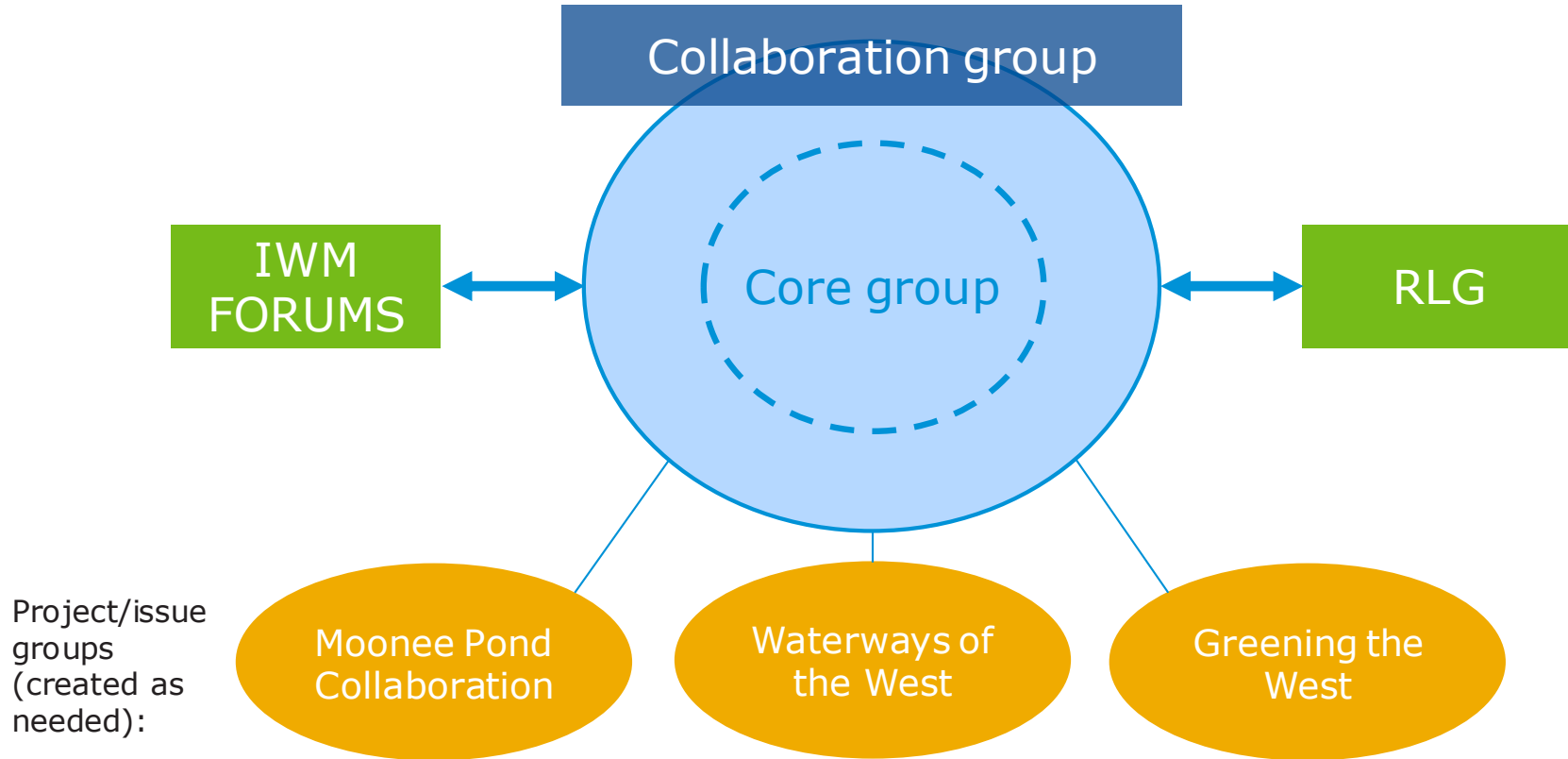


Possible collaboration model

Strawman process



Strawman model



Functions/Roles

Collaboration partners meet 2-4 times a year to:

- Identify barriers to achieving common goals
- Identify opportunities
- Share collective knowledge, learnings
- Report back, monitor and evaluate progress of the catchment program
- Plan together
- Region-wide alignment
- Influence, educate, raise awareness and build capacity
- Advise Region-wide Leadership Group (RLG)

Principles – The partners value...

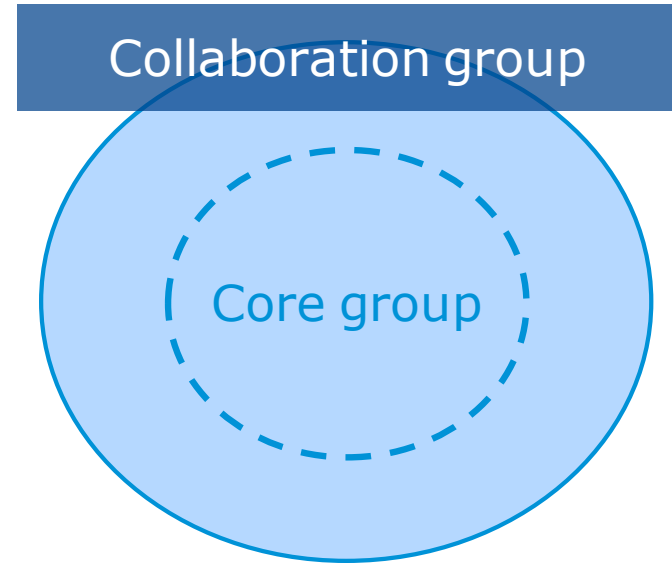
- Good communication channels
- Experimenting together
- Strong networks, relationships, leadership and accountabilities
- Continuous evaluation/learnings
- Multiple outcomes (waterway and community health, cultural heritage, biodiversity)
- Efficiency (not too many forums, clear relationships)

Success – The partners know they are successful when...

- We understand the actions that we need to take and their order of priority
- We have a worthwhile set of projects for which we can seek funding and/or collaborate
- We respond to calls for submissions timely and where possible in an aligned manner
- Community and collaboration partners are engaged actively (Citizen Science) and connected to the targets

Do we need a core group?

- To convene
- To share ideas
- Track progress
- How would this group relate to broader group?
- What kind of organisations would send representatives?
- What would diversity look like?
- What skills are needed?

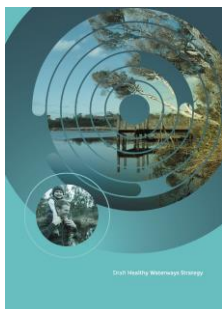


Catchment collaborations: Key relationships

HWS Collaborative Implementation Framework

Catchment forums

- Oversight of Catchment programs
- Catchment collaboration



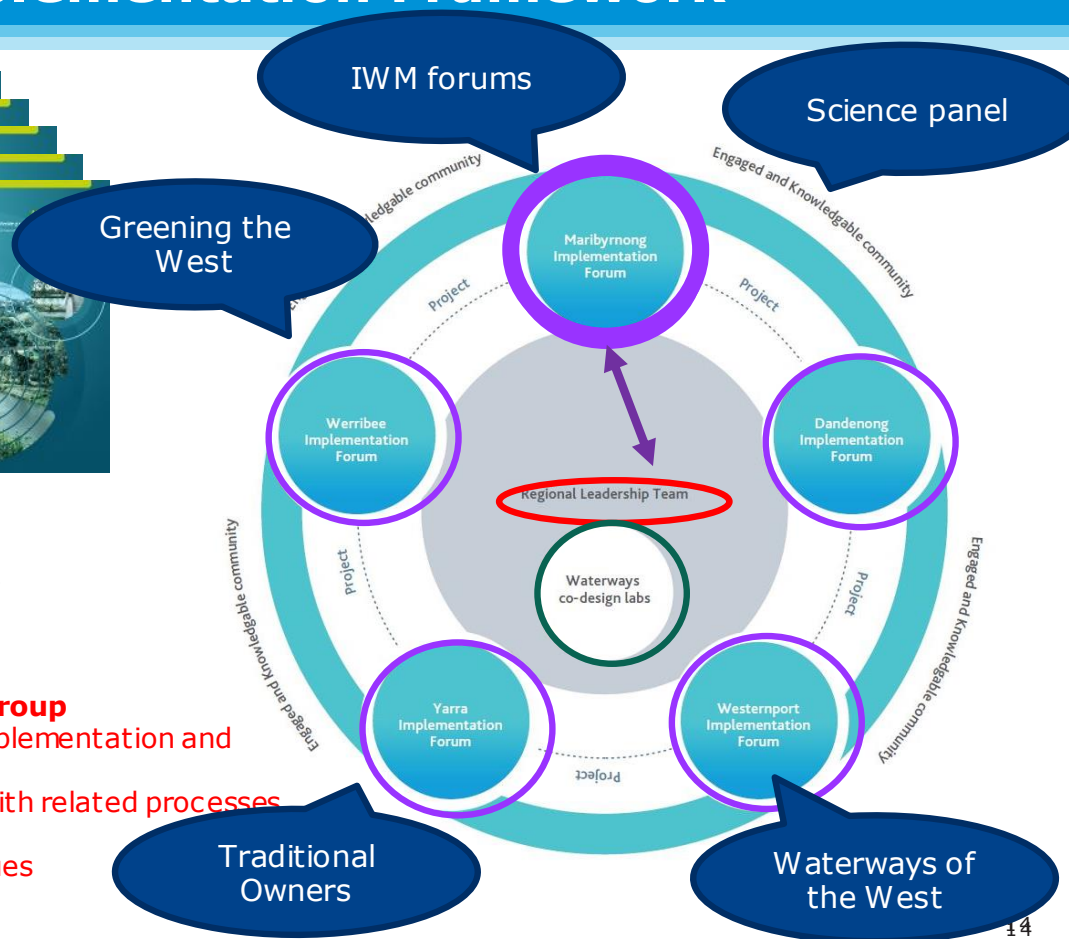
Waterways co-design labs

- Think-tank for region-wide issues

Region-wide Leadership Group

- Oversight of Strategy implementation and governance
- Influence and linkages with related processes and policies
- Process for systemic issues

[Healthy Waterways Strategy](#), page 149



Key relationships for the Maribyrnong collaboration: A conversation starter...

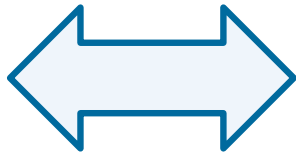
- Region-wide Leadership Group
 - Via MW?
 - RLG member joins Mari collab?
 - Mari collab member joins RLG?
- Science panel → primarily via RLG?
- Traditional Owners → Likely to establish independent governance
- IWM forums → via the IWM working group?
- Waterways of the West → Regular updates
- Are there any other key relationships?

Next steps

The Region-wide Leadership Group

Interim Region-wide Leadership Group (RLG)

- Develop ToR for on-going RLG
- Initiate changes
- Oversee Strategy implementation
- Strategic alignment
- Champion co-delivery
- Process for systemic issues
- Champion the science and ensure it is shared




Next steps

- Convene the **core group** to digest outcomes of today and **start planning** for our next conversation / gathering
- **Regional Leadership Group** - meet on Friday, progress Terms of Reference
- **Waterways of the West** – update from Pratji, DELWP
- Reporting Framework (MERI) draft for comments end June.
- Region-wide **EduComms Lab** on June 18 to work with Communications and Education specialists to discuss key messages for waterways. To see if it's a challenge we can tackle together.
- Community Conversations

Maribyrnong & Moonee Ponds Creek Catchment Conversations

<https://yoursay.melbournewater.com.au/healthy-waterways/maribyrnong-conversations>

 **yoursay**

Search


HOME OUR COMMUNITY ALL PROJECTS

Maribyrnong conversations

A space to share your events, news, knowledge and successes creating healthy waterways in the Maribyrnong Catchment.

f t in e

+ FOLLOW



Home / Creating healthy waterways together / **Maribyrnong-conversations**



Dandenong
conversations



Maribyrnong
conversations



Werribee
conversations



Westernport
conversations



Yarra
conversations

How to post an update

Join the conversation by adding an update or story, 'like' someone else's post, or comment on other posts.

Your comments and screen name will be displayed publicly, but we won't share your email details unless you add it to the content.

Share and comment as much as you like!

Thank you

Spare slides

Investment Plan - context

10-year Performance Objectives



1-year Priorities



2019/20 Waterway Condition and Stormwater Quality Investment Plan

13 December 2018

Info link: <http://info/info/csa/www/link/50782034>



Melbourne Water is owned by the Victorian Government. We manage Melbourne's water supply catchments, rivers and most of Melbourne's storage, and manage rivers and creeks and major drainage systems throughout the Port Phillip and Westernport regions.



Enhancing Life and Livability

Waterways and Drainage Investment Plan (WDIP)

What is the Investment Plan and why is it important for the HWS?

- Details MW's proposed program of works and associated investment in waterways, flood protection and preparedness, drainage, and stormwater management.
- Aligns programs with identified priorities in the HWS, community priorities and willingness to pay; proposes actions that will work towards POs and targets.
- Mandatory for ESC regulated price setting, enabling revenue to pay for five year programs from 2021/22 to 2026/27

How can the HWS catchment communities be involved in the WDIP review?

- WW&D Customer Council: established, incl. representatives across the catchments
- Feedback & FAQs on the Price Submission YourSay page

