

Landcare Biolink Projects on the Mornington Peninsula



Background to MPLN

- ❖ Mornington Peninsula Landcare Network formed in 2014
- ❖ 11 Landcare groups
- ❖ Assisted by Landcare Facilitator, Jacqui Salter





The Mornington Peninsula Landcare Network (MPLN) aims to

“Protect and enhance the unique natural environment of the Mornington Peninsula by promoting responsible care of the land”.

Key Objectives

To achieve our vision of protecting and enhancing the local natural environment, MPLN will focus on achieving the key objectives of:

- Community Engagement
- Capacity Building
- Education
- Advocacy
- Action
- Communication

MORNINGTON PENINSULA SHIRE LANDCARE GROUPS



Current Projects of MPLN

- ❖ Greens Bush to Arthurs Seat Biolink project (GB2AS)
- ❖ Linking the MP Landscape (LMPL)

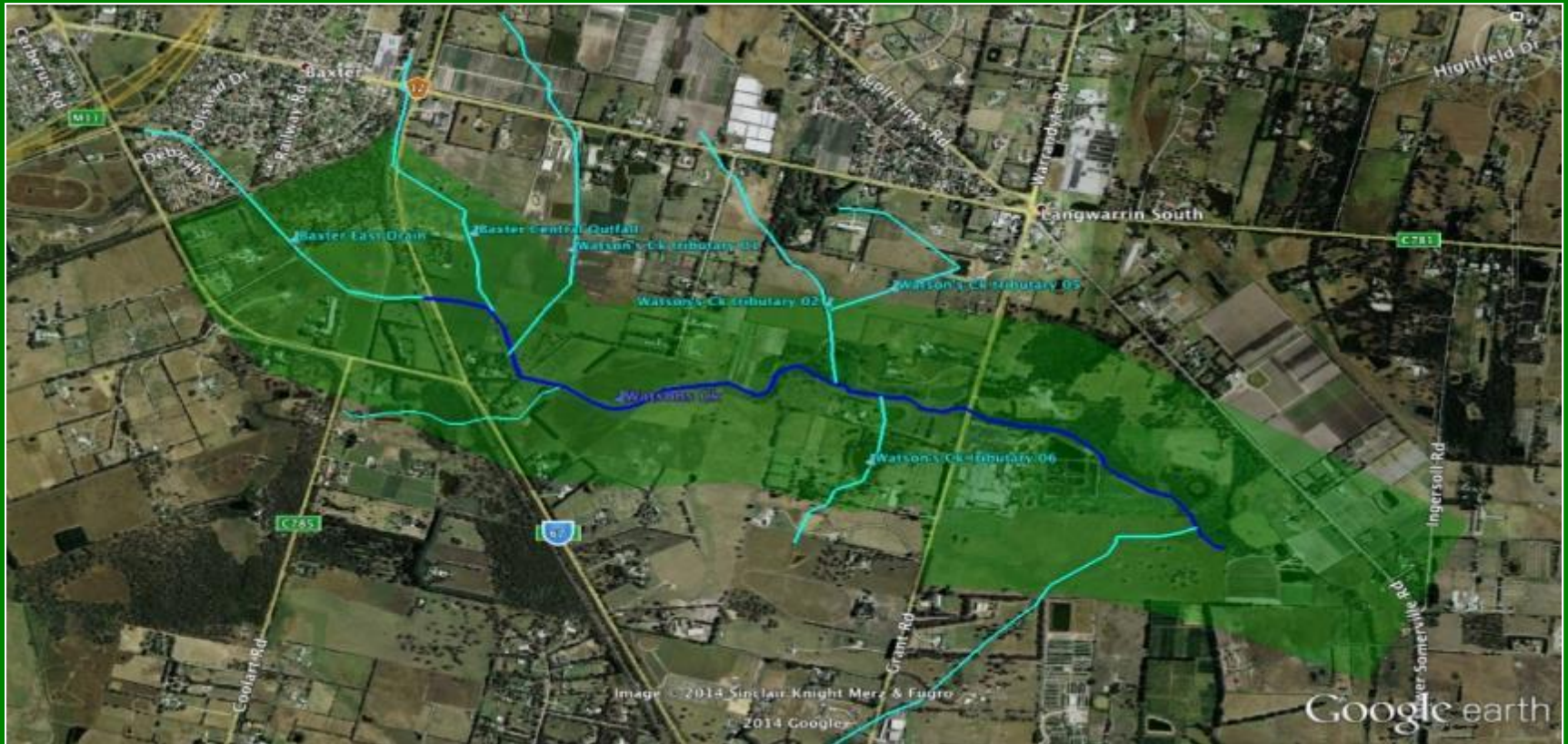


Linking the Mornington Peninsula Landscape

MPLN's biolink planning project:

- Goal - To develop 11 biolink plans in priority areas across the peninsula
- Each biolink plan = Fully costed restoration plan for 8-10 adjacent private properties
- Six biolink plans have been completed, through funding from ***Natural Resources Conservation League*** Victoria

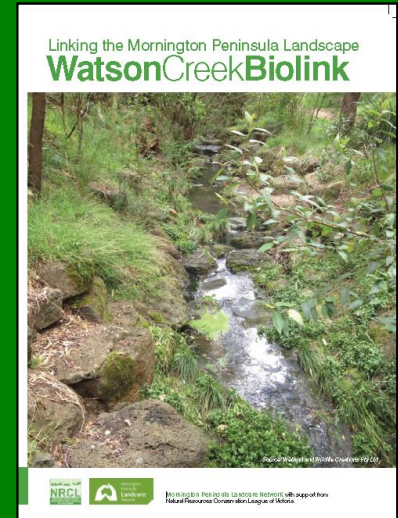
This project empowers MP Landcare groups to work with their local community to develop local biolink plans that fit within our regional plan.



Watson Creek Biolink

Completed LMPL Biolink plans

- Watson Creek Catchment
- Sheepwash Creek Catchment Landcare
- Main Creek Catchment Landcare
- Southwest Mornington Peninsula Landcare
- Red Hill South
- Dunns Creek Landcare



Each of these Landcare groups has since received funding to implement their plans

LMPL future directions

Currently seeking funding to develop
biolinks plans for:

- Manton & Stony Creeks Landcare Group
- Merricks Coolart Catchment Landcare Group
- Balcombe Moorooduc Landcare Group
- Four Creeks Landcare Group

MPLN Biolink projects & Melbourne Water Healthy Waterways Objectives:

Through weeding, fencing of remnants and revegetation, this project will contribute to the goals of:

- ❖ Establishing and maintaining continuous vegetated buffers along priority reaches
- ❖ Maintaining high and very high quality vegetation through effective monitoring and management of threats
- ❖ Mitigating threat of erosion on Mornington Peninsula waterways
- ❖ Reduce nutrient and sediment runoff from rural land
- ❖ Conserve all currently listed water dependent species and communities (16 fauna species, 106 flora species and 37 EVCs) through habitat protection

Greens Bush to Arthurs Seat Biolink



- ❖ Mornington Peninsula Landcare Network received \$300,000 from the State Government's "Our Catchments, Our Communities" (OCOC) initiative through PPWCMA
- ❖ March 2017 to June 2020

GB2AS Collaboration

- ❖ PPWCMA & State Government – Funding project
- ❖ PPWCMA – initial veg quality analysis
- ❖ MP Shire – Host Project Coordinator
- ❖ Parks Victoria – Collaboration re: timing of works
- ❖ Melbourne Water - Stream Frontage program
- ❖ Birdlife Australia – Bird surveys on private land
- ❖ Bunurong Land Council – Advice on cultural heritage protection
- ❖ NRCL – Funded biolink plans
- ❖ Chisholm & Homesglen Tases – fauna monitoring, seed collection, revegetation

Greens Bush to Arthurs Seat Biolink

- This project is restoring around 25 private properties between Arthurs Seat State Park and Greens Bush through revegetation, weeding, fencing & community pest control
- Improves landholder knowledge re: best practice land management & pest control



Assets protected

- Wetlands, waterways and groundwater
- Indigenous flora & fauna
- Cultural Heritage (identified in MPLN's Strategic Plan)



Threats mitigated

- Predation by foxes
- Weed invasion
- Lack of landscape connectivity
- Inappropriate livestock grazing
- Climate change
- Elevated nutrients



GB2AS Progress to date

- ❖ Participation - 22 landholder agreements
- ❖ Revegetation - 16,000 indigenous tubestock (13 properties)
- ❖ Weed control - 41 hectares (16 properties)
- ❖ Stream Frontage – 2km of priority reach areas (11 properties participating in Melbourne Water Stream Frontage program)
- ❖ Fencing - 1.92 km (stock exclusion)
- ❖ Community Engagement – numerous field days & workshops regarding best practice land management
- ❖ Monitoring - fauna cameras, drone footage, bird surveys
- ❖ Pest management – 247 ha (shooting and baiting programs)
- ❖ Nestbox program

GB2AS & Melbourne Water Healthy Waterways Objectives

Mornington Peninsula (Western & South Eastern Creeks)
Performance Objectives:

- **2) Vegetation extent** - establish a continuous vegetation buffer & maintain existing vegetation in priority reaches using EVC benchmarks
- **4) Vegetation Quality** - Maintain or achieve high and very high quality vegetation through effective monitoring and managing threats, including protection of endangered EVC's
- **6) Participation** – Increase participation rates & build capacity of landholders

**Three Priority Reach Areas: Drum Drum Alloc, Main
and Splitters Creeks**

How GB2AS complements Melbourne Water Objectives

Mornington Peninsula (Western & South Eastern Creeks)
Key Values and targets:

- ❖ Birds (riparian) – targeted management
- ❖ Fish – improvements to riparian vegetation & water quality
- ❖ Frogs - improvements to riparian vegetation & water quality
- ❖ Macroinvertebrates - improvements to riparian vegetation
- ❖ Vegetation (including quality and extent) - control of pest plants and animals, stock management
- ❖ Amenity & Community Connection
- ❖ Water Quality
- ❖ Participation

Thank you

Contact details:

Jacqui Salter, Landcare Facilitator

Ph: 5950 1279 (Mon-Wed)

Mob: 0408 213 079

Email: jacqueline.salter@mornpen.vic.gov.au