

M41 Water main renewal project

Edinburgh Gardens Community Bulletin December 2017

M41 water main renewal project overview

The M41 water main runs from Holden Street in North Fitzroy to Wellington Parade in East Melbourne. It supplies high quality drinking water to Melbourne's inner suburbs and needs to be replaced to avoid the disruptive leaks which have increasingly occurred in the past few years.

The construction contract for the M41 project is expected to be awarded by the end of this year, and once appointed, the contractor will refine the alignment design in consultation with stakeholders. This will include development of a work schedule for construction of the project. Construction of the new M41 water main is expected to begin in early to mid-2018.

Feedback

The project team has been engaging with local community members for the past year to provide advance notice of this major infrastructure project. We have heard from many residents and local business and have incorporated this valuable feedback into our design process.

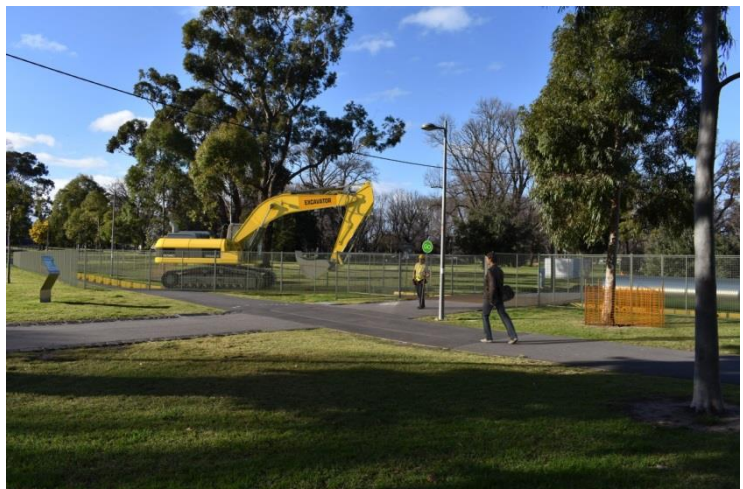
Community feedback has included comments on:

- Resident parking
- Construction impacts, particularly vibration
- Protection of mature trees

What to expect in Edinburgh Gardens

We will work hard to pass through the park as quickly as possible and expect the new pipe to be installed in approximately six weeks. We will maintain east-west access across the park, although park users and cyclists will likely be diverted to an alternative pathway in the northern section of the park for a period of time.

Augmented reality photograph provides an impression of how the park will look during construction.



We heard from many residents about the importance of protecting mature trees in Edinburgh Gardens. The alignment map shows a new alignment which avoids all mature trees in the park.



Reinstatement

Once the works have been finished, we will reinstate the park according to City of Yarra's specific requirements.

Fawkner Park

In 2013 we carried out similar construction of the M39 water main in Fawkner Park, South Yarra. The pictures below show the park before, after and during construction.



Fawkner Park in 2013 before we started working on the M39 water main and the same area in 2017



Working in Fawkner Park in 2013 and protecting trees in Fawkner Park during M39 works in 2013

Historic Edinburgh Gardens

Melbourne Water acknowledges the rich history of Edinburgh Gardens, which includes an iconic football club, a railway line and station, industry and our M41 water main. The existing M41 water main was built in 1928 and runs through an area near where there was once a creek.

We understand the importance of Edinburgh Gardens and how valued the park is to the local community. The gardens are also important for the safe transfer of drinking water to inner-city residents and to carry stormwater away through our North Fitzroy main drain. The rain garden in the centre of the park, which Melbourne Water helped establish in 2011, uses water from the North Fitzroy main drain.



Department of Lands and Survey map including Edinburgh Gardens in 1867 (State Library) and rain garden, Edinburgh Gardens, July 2017

While we will work to avoid or mitigate impacts, Melbourne Water apologises in advance for any community disruption caused by this important work

Keep up to date with what's happening

For more information about this project or our other activities please call the M41 team on 1800 316 713 or visit www.yoursay.melbournewater.com.au/m41



Interpreter

For an interpreter, please call the Translating and Interpreting Service (TIS National) on 13 14 50



Like us

facebook.com/melbournewater



Follow us

@MelbourneWater



Visit us

www.melbournewater.com.au